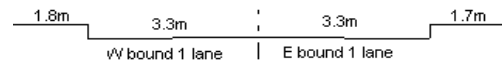


YEAR

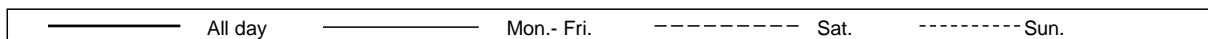
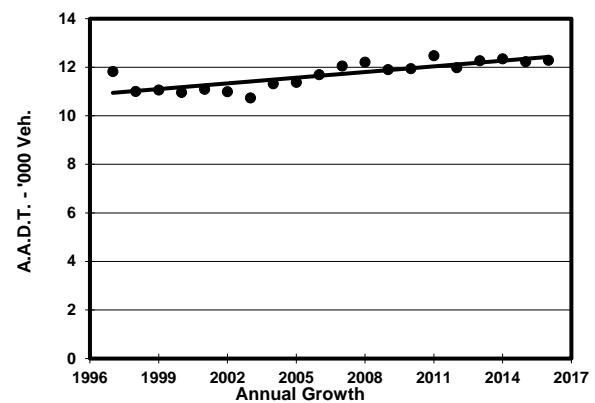
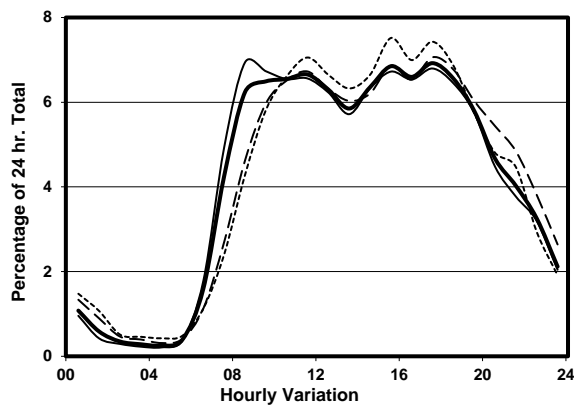
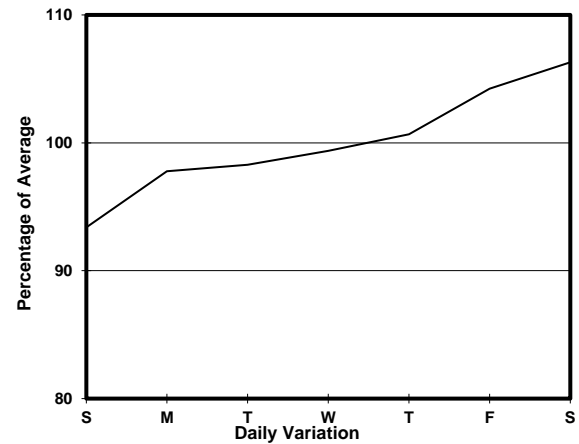
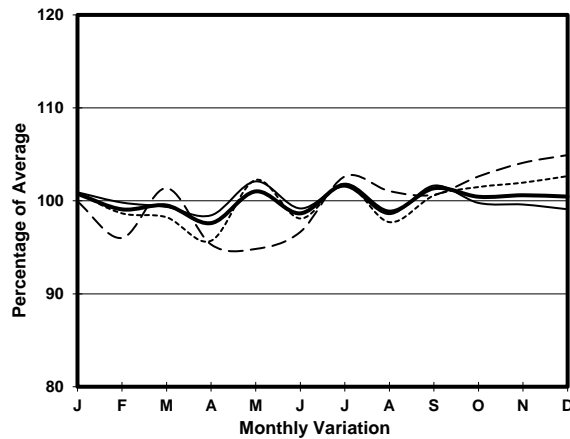
2016

LINK

PEAK RD (from MT. AUSTIN RD to MAGAZINE GAP RD)

CORE STATION
ROAD NETWORK
ROAD TYPE1014
MAJOR
DISTRICT DISTRIBUTOR

1. TRAFFIC FLOW VARIATION AND GROWTH



2. TRAFFIC CHARACTERISTICS (BY DIRECTION)

Parameter	All - Day	Mon. - Fri.	Sat.	Sun.
EAST BOUND				
A.A.D.T.	5910	5900	6500	5560
R 12 / 24 - %	74.9	76	70.9	74.2
R 16 / 24 - %	93.3	93.7	92.1	92.7
AM Peak Hour	0900-1000	0800-0900	0900-1000	0900-1000
One-way flow at AM peak hour	410	430	430	340
T - % (AM)	-	-	-	-
PM Peak Hour	1800-1900	1800-1900	1700-1800	1700-1800
One-way flow at PM peak hour	410	410	450	390
T - % (PM)	-	-	-	-
Prop.of commercial vehicles - 16 hr.	-	-	-	-
WEST BOUND				
A.A.D.T.	6380	6440	6620	5960
R 12 / 24 - %	76.2	77	73.7	74.9
R 16 / 24 - %	93.4	93.7	92.8	92.4
AM Peak Hour	0900-1000	0800-0900	0900-1000	0900-1000
One-way flow at AM peak hour	390	430	360	330
T - % (AM)	-	-	-	-
PM Peak Hour	1700-1800	1700-1800	1700-1800	1700-1800
One-way flow at PM peak hour	460	460	480	460
T - % (PM)	-	-	-	-
Prop.of commercial vehicles - 16 hr.	-	-	-	-

3. OTHER INFORMATION AND COMMENT